



BYOD

Year 7 2022



What is BYOD?

- “Bring your own device” (BYOD) refers to students bringing a personally owned device to school for the purpose of learning.



BYOD 2022

- BYOD has been implemented for all years since 2015 at Cronulla High School.
- Students are oriented to BYOD, connected to the DoE Wireless and assisted in the install of Microsoft Office, Adobe Creative Cloud and their Mathematics Textbooks.
- A small number of students rent an older Laptop for \$30 per term.



Suitable Device Recommendations

- Business Device – Laptop
- A device able to connect wirelessly to the DER Wireless – Minimum Wireless 802.11N “Dual Band” or “AC” running at 5 GHz with WPA2 enterprise authentication.
- Size: between 11” – 14” Screen



Suitable Device Recommendations – PC or Mac

- Minimum
 - SSD: minimum 256GB SSD Solid State Drive
 - RAM: minimum 8GB
 - Processor: Ryzen 3 or i5
- Recommended for 5-7 years use
 - SSD: minimum 512GB SSD Solid State Drive
 - RAM: 16GB
 - Processor: Intel i5 (late models) or AMD Ryzen 5 or 7



Computers Now Student Portal for Mac

- Computers Now is an approved supplier who operates a Portal for purchases of equipment that meet the schools BYOD requirements
- Devices offered:
 - Apple – Macbooks 13" Air or Pro M1
 - Includes 3 years Apple Care
- Cronulla High does not gain any advantage from purchases made on this portal – could be good for price matching



Windows Device Examples

- Minimum
 - Inspiron i5 3000 (Ryzen 3, 256GB SSD, 8GB RAM)
- Premium
 - LG Gram, Dell XPS, HP Envy (all with minimum 256GB SSD, 8GB RAM)



Mac Device Examples

- Apple Macbook Air 13"
 - M1 - 8 core CPU/GPU
 - 8GB RAM
 - 256GB SSD
- Apple Macbook Pro 13"
 - M1 – 8 core CPU/GPU
 - 8GB RAM
 - 256GB SSD



Protecting your BYOD

- Sturdy Laptop Case
 - Thule are a good brand to fit 13" Laptops
- Backpack with a Laptop Sleeve
- Include these items in your Budget





Recommended Software

- PC – Windows 10
- Mac – MacOS 10.14 (Mojave) or Above
- Microsoft Office – DoE provides a free license for school students for PC and Mac
- Adobe – DoE provides a free license for school students for PC and Mac – Yearly Subscription





Connection Process

- Technology Team will run sessions to assist students with the connection process during Week 3 for Term 1 2022
- Students will need to be an **admin** on their device and any security software



Backup

- Students are responsible for backing up of their own device.
- External device backup (USB or HDD)
- Cloud backup (OneDrive/iCloud/Google Drive/DropBox)
- Hardware or software failure is not an allowable excuse for not submitting class work or assessment tasks.



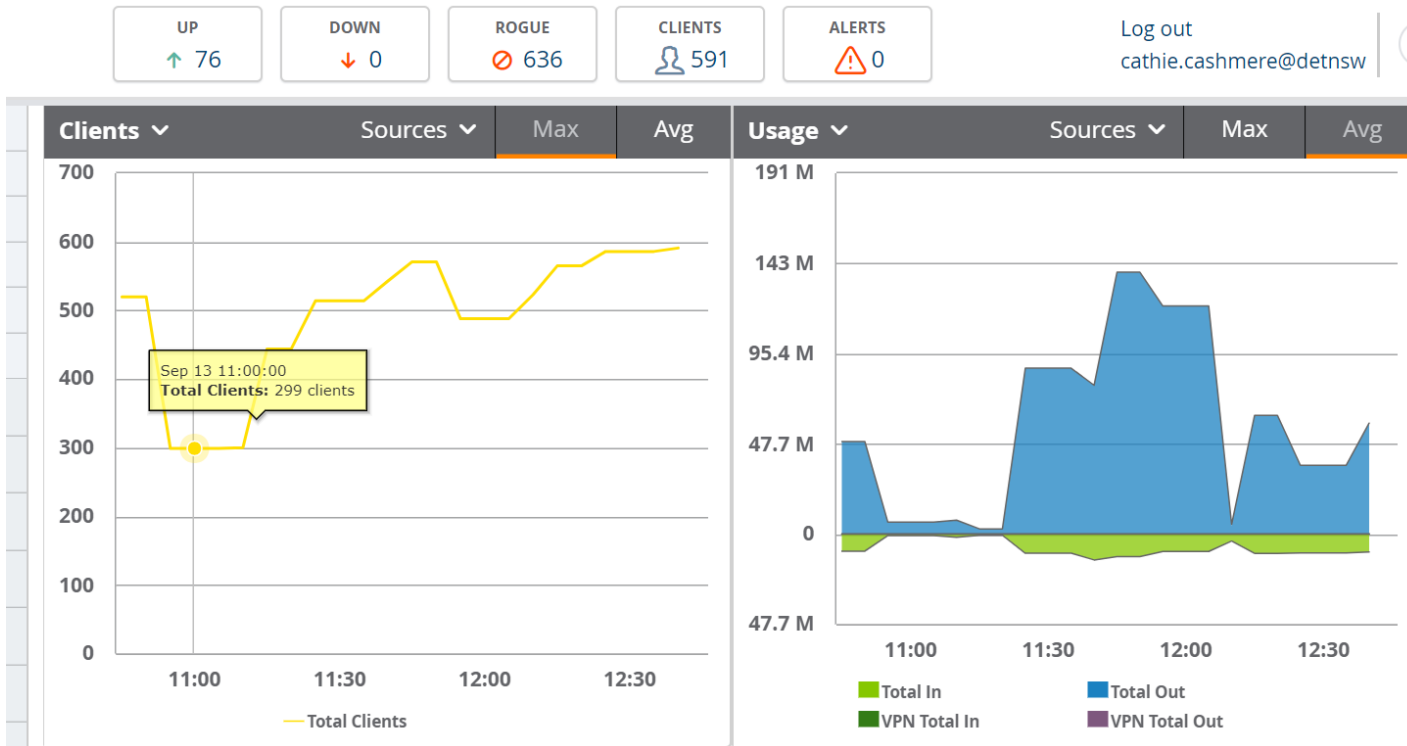


School Wireless Specs and Availability

- DER supplied wireless infrastructure running at 5 GHz is available in all learning areas
- Cronulla High School has full wireless coverage
- Authentication is by the Student Portal Account and monitored through Airwaves Management System
- Internet access is filtered through the DoE Proxy Servers



Airwaves Management System - Monitoring



There are 84 access points (APs) across the school

TSO access to live network data:

- Access Point (AP) status
- Devices (BYODs) connected
- Network usage
- Location of devices in school





Airwaves Management System – Per Device Data

Data is monitored for:

- Multiple logins of same user
- Abnormally high usage
- Restricted user accounts

usage ▼ [Total Row Count: 428]			
USERNAME ▲	MAC ADDRESS	AP/DEVICE ▼	USAGE
abby.bryant	B8:E8:56:05:07:A2	08261_d18269aar01	100 Kbps
abby-rose.wallpowell@detnsw	F0:79:60:1B:84:18	08261_dr1008aar01	44.7 Kbps
abigail.sherrin	A4:D1:8C:C5:15:CA	08261_dr0026aar01	55.1 Kbps
adam.smith286@detnsw	A8:86:DD:9E:13:FA	08261_ar0013aar01	142 Kbps
alec.williams1	C8:1E:E7:50:96:D7	08261_er1008aar01	-
Alex.Aguilar	5C:E0:C5:0C:91:99	08261_er0008aar01	21.3 Kbps
alexander.galea	58:00:E3:FE:84:E7	08261_cr0003aar01	383 Kbps
alexander.russell4@detnsw	F0:42:1C:A4:74:6E	08261_hr0001aar01	42.6 Kbps
alex.steel1@detnsw	4C:0B:BE:08:C1:58	08261_er1010aar01	20.6 Kbps
alia.lambert	00:DB:DF:E9:5F:F7	08261_er0002aar01	17.7 Kbps
ali.awada5@detnsw	A8:66:7F:2E:E5:6F	08261_er1008aar01	15 bps
alicia.tiani1	6C:40:08:A7:87:AC	08261_gr1005aar01	75.8 Kbps
alison.breccia2@detnsw	68:A8:6D:4C:77:8A	08261_er1012aar01	1.21 Kbps
alkira.kennedy@detnsw	C8:69:CD:89:96:7E	08261_cr0003aar01	-
alicia.wolf@detnsw	A8:66:7E:1E:43:14	08261_er0008aar01	139 Kbps



Student BYOD Policy

- All Students have been provided with a copy of Cronulla High School Policy with enrolment documents and must sign and return to school
- Students bring devices onto school site at their own risk.
- Insurance is at students cost. Some parents use House Contents Insurance to cover devices.
- Students agree to acceptable use of devices.
- Policy document available on School Website under Our School/BYOD.



Student BYOD Policy - continued

- From Week 3 Term 1 of 2022 the orientation process will commence, and students will be advised from what date they can bring their BYOD.
- Students should not bring a device before their orientation session



Classroom Policy

- Bring their laptop to class except Thursday due to sport
- Ensure that the laptop is charged
- Not interfere with other students' laptops or their work
- Follow the teacher's instruction and access only the resources as directed by the teacher
- Not use earphones unless directed to do so by the teacher
- Refrain from taking unauthorised photos or recordings using the laptop
- Backup your work



Classroom Use of Device

- Laptops are being used by students in all years, here are some examples
 - Literacy Planet – English. Hot Maths – Mathematics.
 - School Systems – Email, eDiary & Moodle
 - Office – Word, Excel, PowerPoint
 - Adobe Creative Suite – Photoshop, InDesign, Animate, Premier Pro etc.



Digital Citizenship

[NSW Department of Education](#)

Digital Citizenship

[Home](#)

[About](#)

[Teachers](#)

[Parents](#)

[Students](#)

[Browse all](#)

"It's not all about the likes"

How your digital behaviour affects you and others.





Technical Support at School

- Orientation provided for each Student by Class From Term 1 Week 3 in 2022
- Connecting Device to Wireless
- Assistance with the installation of DoE negotiated Software
- Connection to and instruction on use of eDiary and Moodle



TSO Levy

- As there is no funding to support a Technical Support Officer (TSO) in schools anymore like most schools it has been necessary to levy parents.
- \$30 will be charged per year per student to help fund this essential role in school. This will pay for 35% of employing a TSO, with the school funding the balance.
- TSO will be available in 2022 for five days per week to provide ongoing support to students.



Computer Access Levy

- An annual computer access levy of \$30 per student per year will continue to be charged.
- This levy covers:
 - Access to printing both black and colour
 - Access to desktop computers in Computer Laboratories and the School Library to use specialist software
 - Provide and update infrastructure - new servers, new wi-fi access points



What we have learnt to date

- BYOD can only work with a Fulltime TSO
- Some parents buy a laptop that is too large for the student to carry on a daily basis
- Students are not an admin on their laptop which hinders installation of software
- Students forget their passwords and usernames
- Value of license Adobe CC - \$700/Year. MS Office is \$150 one off payment. Note: Provided free to students.



What we learnt to date - continued

- Students install games on their laptop that prevents the laptop from connecting to our WiFi
- Students download illegal material on laptop
- Students don't care adequately for their laptops and the laptops get damaged – repairs are not the responsibility of the TSO
- Students forget their passwords necessitating change and alterations to network settings
- Primary School Passwords – reset when students come to High School (more strict security rules for passwords – password strength)



Any Questions

- Email school account at cronulla-h.school@det.nsw.edu.au