

# **CRONULLA HIGH SCHOOL**



**YEAR 7 2025**

**INFORMATION BOOKLET**

**ORIENTATION DAY**

Tuesday 3 December 2024

# Contents

---

<b>Meet the Staff.....</b>	<b>1</b>
<b>Orientation Day Program .....</b>	<b>2</b>
<b>General Information.....</b>	<b>3</b>
<b>First day at Cronulla High School.....</b>	<b>3</b>
<b>Helping you settle into Cronulla High School.....</b>	<b>3</b>
<b>First week at Cronulla High School.....</b>	<b>3</b>
<b>Year 7 Camp .....</b>	<b>4</b>
<b>Camp Guidelines &amp; Gear Checklist.....</b>	<b>5</b>
<b>Student Absences .....</b>	<b>6</b>
<b>Student Transport.....</b>	<b>6</b>
<b>Vaccination Program .....</b>	<b>7</b>
<b>Creative and Performing Arts Faculty (CAPA).....</b>	<b>8</b>
<b>School Map .....</b>	<b>9</b>

---

# Meet the Staff

---



Mr Ibrahim  
Principal



Ms Edwards  
Deputy Principal



Ms Geldart  
Deputy Principal (Rel.)



Ms Hatzi  
Deputy Principal



Ms Drinkwater  
Year 7 Adviser



Ms Lekkas  
Year 7 Assistant  
Adviser



Mr Tennikoff  
HT CAPA (Rel.)



Mr Pollard  
HT Computer  
Studies



Ms Mihell  
HT English



Mrs Stasos  
HT HSIE (Rel. Mon-Thu)



Mr Minors  
HT HSIE (Rel Fri.)



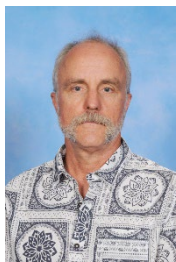
Ms Hargreaves  
HT Mathematics



Mr Welch  
HT PDHPE



Mr Hurst  
HT Science



Mr Colliss  
HT TAS



Ms Ward  
HT Language &  
Secondary Studies (Rel.)



Ms Serinsu  
HT Welfare  
(Tue-Thu)



Ms Hawthorne  
HT Welfare  
(Rel Mon/Fri)



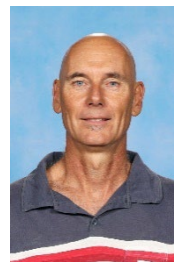
Ms Ralic  
Learning & Support  
Co-ordinator



Ms Guld  
Student Support  
Officer



Ms Rowe  
Librarian



Mr Gosby  
Careers Adviser



Mr Paddy  
Sports Co-ordinator



Mr Sheldon  
Sports Co-ordinator

# Orientation Day Program

---

9.30 am Students tested for Yr 7 class placement in the Hall.  
**Students to bring a pencil, ruler, eraser and morning tea.**  
**Please wear full primary school uniform.**

## Parents attend the library for information session

9.40am	Chairpersons - School Captains	Ella Hewitt Mason Boudville
9.45am	Welcome to Cronulla High School	<i>Principal</i> Mr Tony Ibrahim
9.55am	Student Welfare and Discipline	<i>Deputy Principals</i> Ms Lisa Edwards Ms Susan Geldart (Rel.) Ms Rena Hatzi
10.05am	Transition into Cronulla High	<i>Year 7 Advisors</i> Ms Amelia Drinkwater Ms Maria Lekkas
10.15am	Computer expectations	<i>IT Head Teacher</i> Mr Greg Pollard
10.25am	Support Initiatives for students	<i>Learning &amp; Support Co-Ordinator</i> Ms Jo Allouce (Rel.)
10.35am	Sport at Cronulla High School	<i>Sports Co-ordinators</i> Mr Alan Sheldon Mr Cameron Paddy
10.45am	Creative and Performing Arts at Cronulla High School	Mr Matthew Tennikoff (Rel.)
10.50am	P & C / School Council	<i>P &amp; C President</i> Mr Nick Brady
11.00am	School Uniform	Ms Begg & Ms Day with student models
11.10am	Library Information	<i>Librarian</i> Ms Samantha Rowe
11.15am	Question and Answer time	<i>Senior Executive</i>
11.30am	Students finish testing	

Your Statement of Account for Year 7 has been emailed to you and includes a link to the online payment portal.

The clothing pool will also be available for the purchase of pre-loved uniforms. Stock is limited in variety and sizes.

**Orientation Day is Tuesday 3 December 2024**

## General Information

---

The purpose of Orientation Day is for parents, staff and students to exchange information.

By testing the students in literacy and numeracy and consulting with primary schools, we will be able to better place students into classes for 2025, which match their learning styles.

Eight Year 7 classes are planned with an extension class (7C), a second streamed class (7R) and six mixed ability classes (7O, 7N, 7U, 7L, 7A, 7H). These are not in any ability order – it is simply C R O N U L A H using the letters of the school name.

## First day at Cronulla High School

---

- When you arrive at school, proceed to the hall where your Year advisor will direct you to your roll class.
- Your name will be marked off and you will receive your timetable, your school cap and apron set.
- The Principal will address Year 7 and you will meet other important people in the school.

## Helping you settle into Cronulla High School

---

- Refer to your stationery list, cover and label your books appropriately.
- Label all your equipment and clothing.
- Check your timetable every day.
- Pack your bag the night before.
- Ensure you have a good breakfast and drink a lot of water during the day.
- Allow enough time to arrive at school for the 8:45am starting bell.
- Lockers are available for hire, but are limited in numbers.

(Priority is given to Year 7 students for the first two weeks in Term 1)

## First week at Cronulla High School

---

- Throughout the first week your teachers will meet you in the assembly area at the beginning of each period and take you to class.
- Year 7 students will finish ten minutes earlier each afternoon in the first week to become familiar with afternoon bus procedures.

**If you have any concerns or worries, please see your Year Advisors, Ms Amelia Drinkwater, Ms Maria Lekkas or any member of staff.**

# Year 7 Camp

---

It is expected that all Year 7 students will attend the Year 7 Camp to be held at Camp Yarramundi, near Richmond, from Wednesday 12 February to Friday 14 February 2025. We choose to have this camp very early in the year as it allows students from a variety of feeder schools to get to know one another. It is a very enjoyable experience and should assist to make the transition from Year 6 to Year 7 a smooth and pleasurable one.

Activities are run by qualified instructors and incorporate varying degrees of facilitation to deliver program outcomes such as confidence and team building, leadership and communication, initiative and critical thinking.

Camp group activities may include:

- Archery
- Bush walking
- Canoeing
- Flying Fox
- Giant swing
- Initiative's course
- Vertical challenge
- Rock climbing
- Swimming

.....plus some surprises!

**The cost of the camp is \$350.00.**

**A deposit of \$50 together with Cronulla High School Permission Note must be received by Tuesday 3 December 2024.**

**The balance must be paid by Friday 31 January 2025.**

I ask you to make arrangements for the payment of these costs at your earliest convenience. Any parent undergoing financial difficulty and who has not yet contacted me should do so. I will deal with any issues raised confidentially. It is my aim that no child should be disadvantaged by financial difficulty.

# Camp Guidelines & Gear Checklist

---

## Guidelines

- Never leave camp or activity areas without permission
- All activities must be supervised by an instructor and a teacher
- Listen to and follow instructors guidelines and instructions
- Closed in shoes and a hat must be worn at all times
- Respect male and female areas. Enter no room other than your own
- Respect the natural environment. Please use the bins provided and do not damage the bush.
- No pocket knives, glass, or valuables please (this includes iPods, mobile phones, etc.)
- All accidents/damage to equipment must be reported. Wilful damage must be paid for by the individuals involved
- The food is plentiful, so please refrain from bringing lollies etc. No gum please.
- Respect others after lights out. There should be no need to leave your dorm / cabin after lights out
- Every group is responsible for the ongoing cleanliness of their rooms, and the camp in general.
- Do not tamper with Fire Fighting equipment. Damage will incur a minimum charge to the individual of \$280.
- Do not enter out of bounds areas detailed upon arrival
- Drink water only from the identified tank & carry a water bottle filled before each activity
- Please do not run around the campsite
- Fires are to be lit only by instructors in designated campfire areas
- Swimming is only allowed when supervised by a camp instructor
- Activities are only to be accessed during allocated activity time

## Gear Checklist

- Sleeping bag and pillow
- Water Bottle
- Raincoat (regardless of forecast)
- Hat
- Sunscreen
- Day Pack (small backpack for day walks etc.)
- Torch
- Toiletries
- Insect Repellent
- Towels (2)
- Camera (optional)
- Sturdy closed-in shoes (to be worn at all times while at camp – thongs / sandals are not appropriate for day wear)
- 2nd OLD pair of closed-in shoes in case your shoes get wet (or to be used if kayaking)
- Sandals with a back-strap can be worn if kayaking (not thongs)
- T-Shirts
- Shorts (suitable for harness wear)
- Underwear and socks
- Long pants (appropriate for the season)
- Jumpers / Jackets (appropriate for season)
- Pyjamas
- Swimmers
- Garbage Bag for Wet / Dirty Clothes

**Please nametag all items and please ensure all medication is labelled clearly and passed on to the organising teacher.**

# Student Absences

---

At Cronulla High School, student attendance is a high priority. School attendance and student success are inextricably linked.

We expect parents or caregivers to contact the school before 10.00am on the day of the absence through one of the following means:

- via the Cronulla High School App
- email [Cronulla-h.school@det.nsw.edu.au](mailto:Cronulla-h.school@det.nsw.edu.au) and advise the following
  - **your child's name and year - the day and date of the absence - reason for absence**
- written and signed notes with accompanying medical certificates.

Please note that DoE staff regularly inspect our attendance records and expect schools and parents to be able to justify large numbers of absences.

## Early Leave

In cases of necessity, students may be granted permission to leave school before the end of the school day. A letter or email from parents is required and should show the date it is written, student's name, Roll Call class, the time and date when the student wishes to leave, a complete reason for the request and a signature of a parent or guardian. This should be approved by a Deputy Principal before 8.45am of that day except for Thursdays in which case approval from the Sport Organiser is required. If permission is granted, the student will collect a leave pass from the front office and may leave the school grounds at the allocated time. Limits to Thursday leave apply.

# Student Transport

---

## Train, Bus and Ferry

Applications for school student transport are applied for online.

Students who will travel on the train, bus and / or ferry will need to complete an OPAL card application at [www.transportnsw.info/school-students](http://www.transportnsw.info/school-students) This application is sent electronically to the school for verification and if all details are correct, the school endorses your application. You will be advised if you need to do anything further when you have completed your online application. Transport for NSW then processes the application. Once approved, the School Opal card will be sent to the home address you provided in the application.

The final decision as to eligibility for a train / bus / ferry pass is made by the individual transport authorities and not the school. There can be charges incurred if passes are lost or stolen. Train, bus and ferry personnel have the right to confiscate passes for unacceptable behavior. All issues in respect of transport passes are to be directed to <http://www.transportnsw.info/> or 131 500.





# Is your child in year 7 or year 10?

Provide your consent for routine school vaccinations online.

At the beginning of the school year, your child's school will share the link to complete the online consent form.

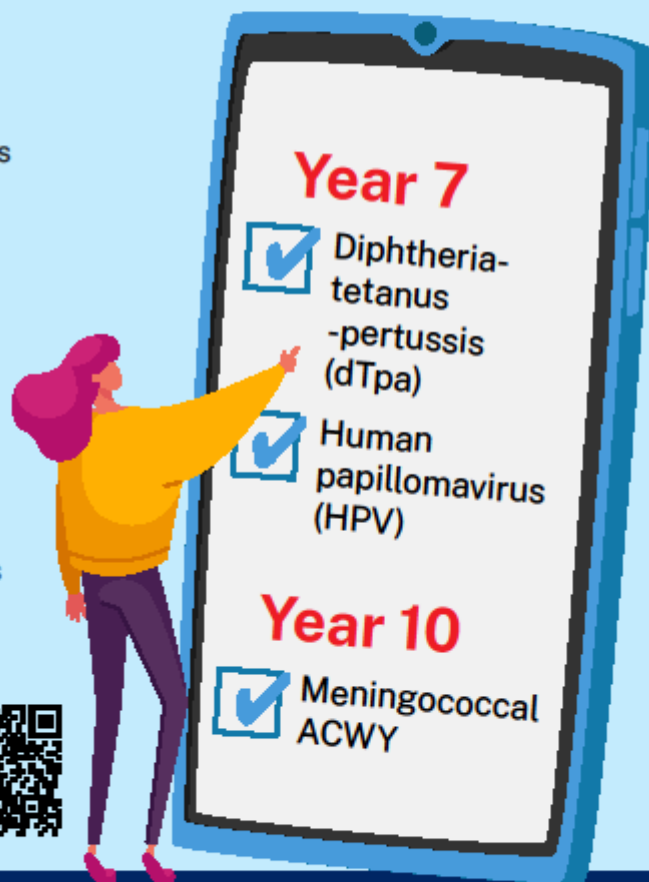
## Benefits of providing online consent:

- easily update your child's details
- get SMS notifications when vaccinations are given
- faster upload of vaccination records to the Australian Immunisation Register (AIR)

## To provide online consent, you will need:

- the link provided by the school
- your Service NSW log-in details
- medicare details for you and your child

Scan the QR code to give your consent now.



For more information on vaccination visit:  
[health.nsw.gov.au/schoolvaccination](https://health.nsw.gov.au/schoolvaccination)

# Creative and Performing Arts Faculty (CAPA)

---

## Co-Curricular

In addition to core lessons and electives, we run a number of co-curricular ensembles and provide many opportunities for students to engage in the creative and performing arts. Ensembles run at different times such as before school, lunchtime, and after school. The ensembles serve two main purposes: to challenge, enhance, and extend our gifted and talented performing arts students, and to offer performance opportunities to students who might be looking to learn new skills and belong to a group.

### In 2025, the following opportunities will be available:

- Training Dance Ensemble
- Junior Selective Dance Ensemble
- Dance Conditioning Ensemble
- Elite Dance Company - *Audition*
- Vocal Ensemble
- Selective Vocal Ensemble - *Audition*
- Senior Drama Company
- Street Art Club
- Visual Arts Club
- School Musical Program (Biennial)  
December 2025
- Year 7 Drama Ensemble
- Year 8 Drama Ensemble
- Elective Drama Ensemble
- Clay Club
- Photography Club
- Musical Theatre Ensemble (Dance)
- Concert Band
- Selected Contemporary Music Ensembles
- Cronulla HS Drumline
- Creative and Performing Arts Tour (Biennial)  
2026

### Tuition Program:

- Guitar Tuition
- Drum Tuition
- Vocal Tuition
- Piano Tuition

**Tuition is organised on a need's basis depending on tutor availability and student interest.**

Some of the annual events in which our extracurricular companies and ensembles perform include:

- Arts in the Dark
- Sutherland Dance Festival
- Regional and State Drama
- Regional and State Dance
- Regional and State Band
- Community events
- Music Night
- School Spectacular
- NSW Arts Unit Programs and Festivals
- Southern Stars Spectacular

As with all co-curricular activities, commitment is a key expectation. Students are given two weeks to try out the various groups. Following this two week period, students must commit to attending on a weekly basis.

## Facilities

- Performing Arts Block including a purpose built dance studio and black box theatre
- Soundproof studio space for individual music tuition and student rehearsal
- Recording Studio
- Ceramics studio
- Dark Room

# School Map

